

Voe Cowl

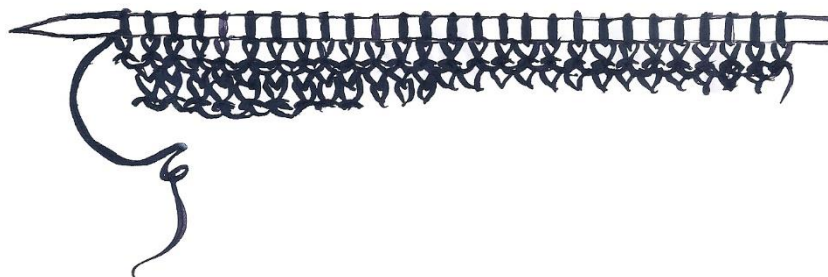


The Voe Cowl from the book *Ultima Thule – Patterns Inspired by the Shetland Islands* Designed by – Denise Bell of Lost City Knits

The word voe in Shetland refers to a small inlet. In these areas where the seawater rushes against the land, abandoned cockleshells can be plentiful on the beaches, and in the fields and pastures, left there by larger storms.

We took a hike along the shore the day before we left Shetland. We passed through gates and climbed over stiles to cross fences, all of which were part of a series of public paths referred to as Shetland Access Routes. These paths often cross private land, and are created and maintained for the public good. I picked up several cockleshells as token reminders of our hike, and they now sit on a bookshelf at home.

The natural and the human worlds meld on Shetland, and Voe is also the name of a community on the mainland. During our visit we were fortunate enough to be invited to the monthly meeting of the Shetland Spinners, Knitters, Weavers, & Dyers Guild. In the little community center in Voe we met with about twenty Shetland knitters. Their lace, colorwork, and kindness still inspire.



Materials

Yarn: Jamieson & Smith Shetland Supreme 1 Ply Lace Weight Cobweb (1 ball)

Alternate Yarn: Lost City Knits North Pasture Alpaca (1 skein)

Yardage: 320 yards / 292 meters (J&S) 350 yards / 320 meters (LCK)

Colors Shown in Samples: White (J&S), Grey (J&S), and Desert Rose (LCK)

Needle Size: US 2 / 2.75 mm circular 24 inch

Finished Size: 24 inches / 61 cm circumference

BASIC INSTRUCTIONS

Two charts are included in this pattern. The first is a modified version of the cockleshell motif that I devised, depicting the ridges of the shell. The second is the traditional Shetland cockleshell stitch.

Begin Cockleshell Chart

Cast on 168 stitches using your preferred method for 8 repeats of the entire chart or, if a wider cowl is desired, increase by 21 stitches for each additional cockleshell. Each shell is approximately 3 inches wide when blocked. Leave a 6-inch tail to be woven in after blocking. Join for knitting in the round.

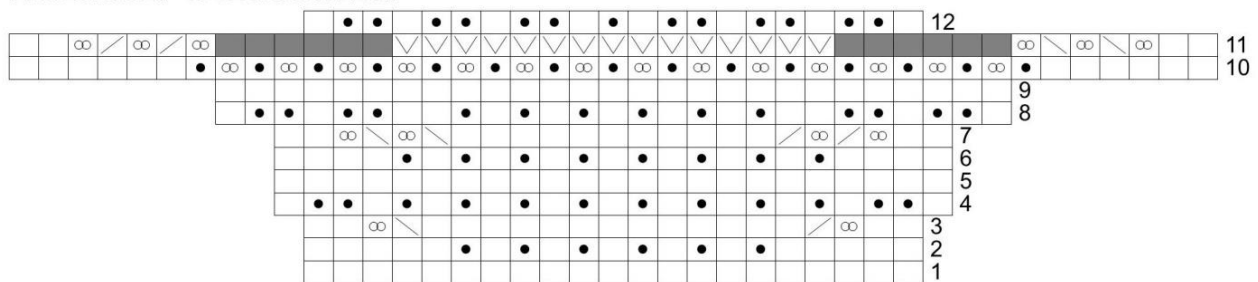
Knit 1 round.

Purl 1 round.

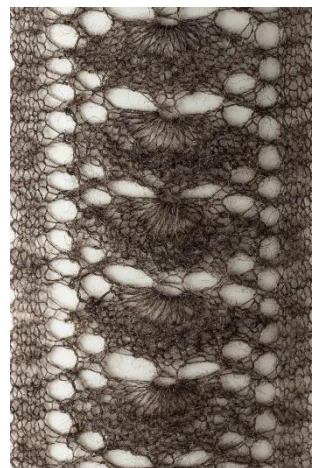
IMPORTANT INSTRUCTION NOTE:

When slipping the purled stitches on Round 11, drop the double yarn overs between the 14 purled stitches, being sure to slip the purled stitch after the last double yarn over for a total of 15 slipped stitches. Transfer the 15 stitches back to the left needle, **THEN** purl the cluster together as one stitch before executing the rest of the stitches on that round. It is a tricky maneuver; take the time to make sure every one of the slipped stitches is caught when purling them together. A dropped stitch will ladder back and ruin the exacting work you've accomplished.

Modified Cockleshell

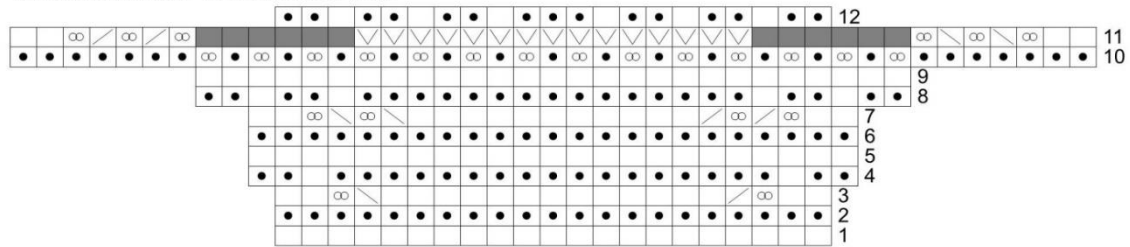


Modified Cockleshell



Traditional Cockleshell

Traditional Cockleshell



Stitches

- No stitch
- k
- p
- ▽ s1
- ◊ k2tog
- ◊ k2tog-b
- ∞ Double Yarn Over

Work 12 repeats of the 12 rounds of the desired chart. After completing your last horizontal repeat of the chart, knit 1 round, purl 1 round, then bind off loosely. Gently wet block your cowl. For blocking the sample cowls, I used a posterboard taped together as a tube and covered with plastic cling wrap. The scalloped curves of the cockleshell edging were pinned open using T-pins.

STITCH GLOSSARY

RS	Right side of fabric	WS	Wrong side of fabric
k	Knit		
p	Purl	double yo	Wrap the working yarn around the right needle twice, from front to back (counter clockwise) (double increase).
s1	Slip 1 stitch from the left to the right needle without knitting or twisting the stitch.	k2tog	Knit 2 stitches together (single right leaning decrease).
No Stitch	This stitch does not exist on your needle. Ignore the cell in the chart and move to the next stitch.	k2tog-b	Knit 2 stitches together through the back of the loop (single left-leaning decrease).



The Voe Cowl from the book *Ultima Thule – Patterns Inspired by the Shetland Islands* Designed by – Denise Bell of Lost City Knits